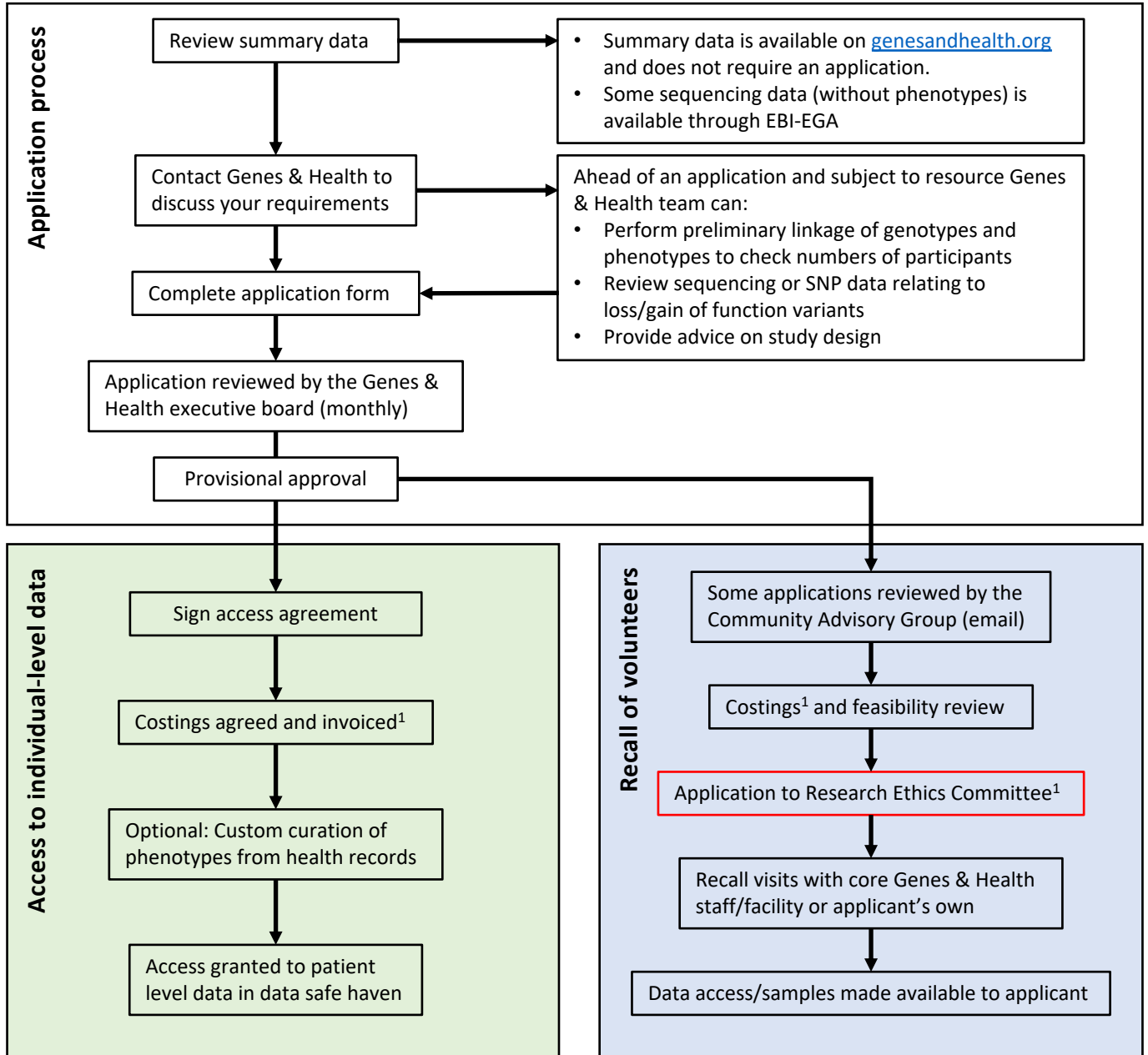


Genes & Health application process



Ongoing expectations:

- Applicants will work within QMUL and Genes & Health data protection requirements
- Submit a 1-page annual report so that we can feed back to the community and our funders
- Notify us of any publications arising from this resource, and reference Genes & Health and our funders

Post project expectations:

- Where applicable results will be published in a peer-reviewed academic journal
- Data generated through linkage and analysis inside data safe haven, including derived variables, will be returned to Genes & Health for use by others
- A summary of the research project and results will be published on genesandhealth.org
- Applicants may be invited to talk about their research at a PPI-focused event

¹Applicants are expected to apply to a research ethics committee for approval. Genes & Health can provide limited assistance, including example protocols & patient-facing documents, and advice on Sponsorship.

Genes & Health costing template

Fees are approximate and subject to agreement by the executive committee

Fees given are for academic/non-commercial studies. Fees for industry projects are calculated on application

One-off charges

Activity	Included	Cost
Set up fee - data access only	Mandatory for all studies requiring only data access Executive review, data safehaven setup, building & staff overheads, data curation	£2,000
Set up fee - participant recall	Mandatory for all studies requiring participant recall. Database build, staff training, building & staff overheads, identifying participants and controls	£4,500
Access to Genes & Health data (in data safe haven)	Cost per user per year Mandatory for all studies using participant-level genetic or phenotype data (limited storage, TBC)	£600
Custom curation of phenotype in electronic health records	Per hour , subject to availability.	£100

Per participant costs

Activity	Included	Cost
Base visit costs (core staff)	Identifying and inviting participants, informed consent, medical history, phlebotomy and consumables, building overheads and maintenance	£200
Fibroscan	Maintenance, staff time, building overheads, data entry/upload	£150
Retinal photography		
iDXA scan		
Clinical laboratory tests	Courier, staff time, laboratory costs Applicant's own The Doctors Lab account required (setup fee applies) - G&H will facilitate sample transport, etc	£ 60-130 (approx)
Additional clinical tests	Dependent on availability and requirements	Cost on application
Detailed medical record review	Subject to availability	£180